

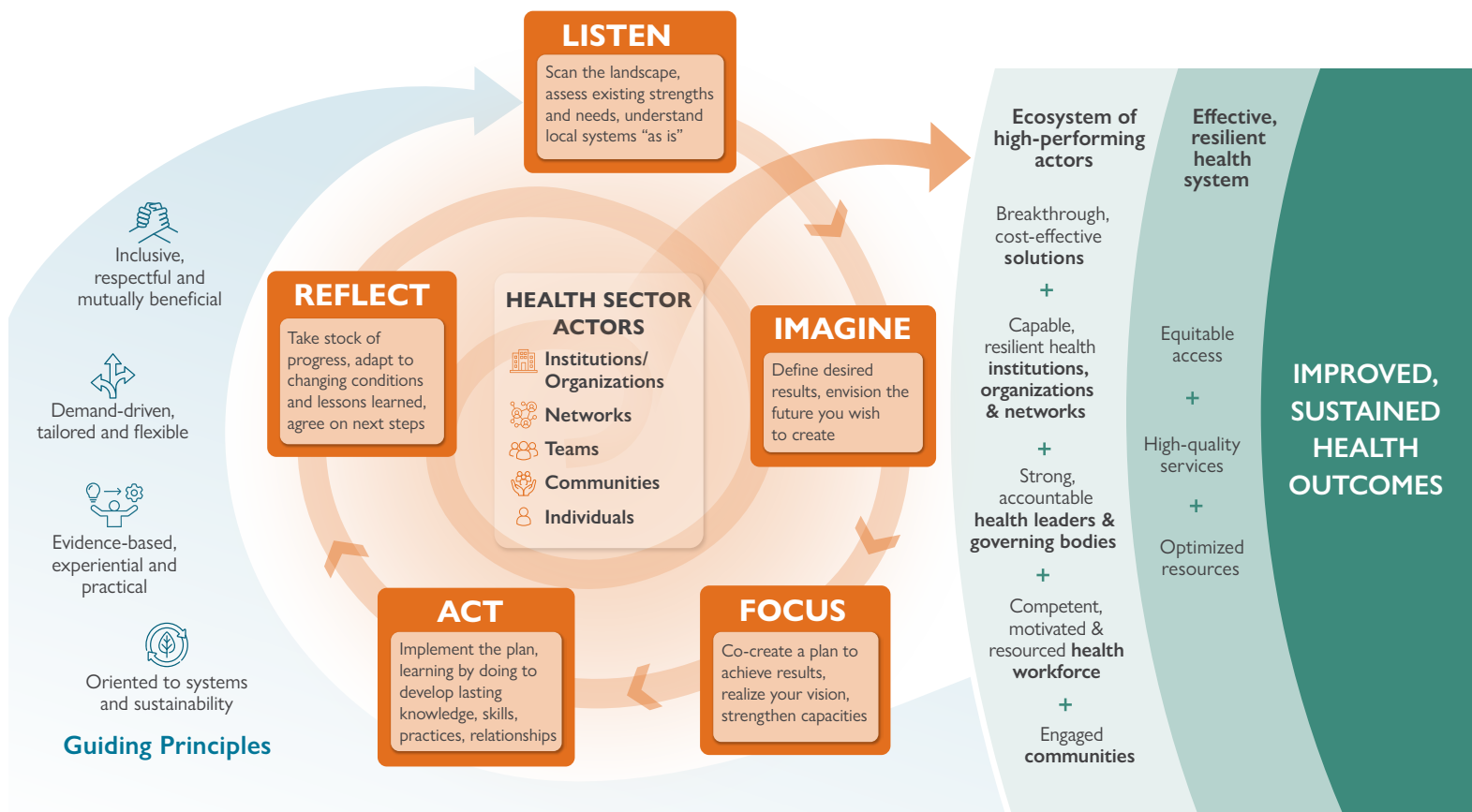
Supporting Governments to Manage Change in Times of Crisis

Sudden, dramatic cuts in development assistance are confronting countries with urgent and difficult choices. Even while moving rapidly to fill immediate funding, supply, and service gaps, health ministries and other institutions need to sustain ongoing reforms, adapt to new realities, and reshape financing, supply, service, HR, and other structures to minimize the health system’s vulnerability to funding and other shocks. Transformative change can happen when decision-makers work together to strategically weigh competing needs, assess costs and benefits, design solutions, mobilize funds to implement them, and capacitate an empowered workforce to put them into action.

The consequences of decisions that countries take now will be enormous: no *ad hoc* or outsider-driven “solution” can make the health system strong, sustainable, and resilient.

Management Sciences for Health offers countries focused, cost-efficient technical assistance and tools to help them meet this historic moment. MSH’s simple, scalable, locally led approaches support government partners in developing the concrete decision-making processes, governance structures, and leadership practices they need to bring stakeholders together to make hard choices, galvanize teamwork, take focused action, and drive lasting results as the stewards of their population’s health and wellbeing.

MSH’s Approach to Capacity Strengthening for Stronger, Resilient Health Systems



MSH is a global nonprofit organization committed to supporting governments, health organizations, and the private sector with the strategies, tools, and management support they need to build strong, sustainable health systems. For more than 50 years, we have delivered technical and implementation excellence and driven sustained results, working with partners in more than 150 countries to strengthen health services, address key health challenges, and equitably improve population health.

For five decades, MSH has been a pioneer in adapting proven private-sector management science and leadership development approaches to produce stronger health outcomes in more than 90 countries. MSH's state-of-the-art **Leadership & Management Accelerator (LMA)** helps governments to create the right conditions to galvanize local ingenuity and meet urgent problems with actionable, evidence-based solutions that optimize available resources. Unlike costly global consultants that offer off-the-shelf solutions and leave implementation to the client, MSH's customized, facilitative approach directly engages governments and stakeholders to generate and implement breakthrough solutions for their own highest-priority challenges, leveraging global expertise but rooting systems change in local realities. With MSH's catalytic support, multidisciplinary teams prioritize needs and identify existing resources, stabilize current conditions, build a shared vision of the future, make a plan to achieve it, execute that plan, and continuously assess and adapt to their results and to changing conditions. As they work together to achieve their goals, partners build lasting leadership, management, and governance capacities, transforming work cultures to achieve new possibilities through shared responsibility and focused action. LMA has proven effective in supporting governments and stakeholders to achieve transformative, collaborative change across the health system, from the national policy level down to districts, health facilities, and communities.

“MSH is one of the most reliable partners we work with, with tailored and strategic approaches that empower local leaders and communities. We have a great collaboration, and we hope it continues.”

-MOH Secretary-General, East African country

At a moment in history when governments are faced with life-and-death choices, MSH is ready to work with you now to shape national and local health systems that leverage limited resources for maximum public health impact by:

- Fostering public-private partnerships and piloting outsourcing models to better mobilize and utilize national resources
- Rigorously assessing the cost-effectiveness of medicines and health technologies
- Strengthening regulatory and supply chain systems
- Accurately costing service packages and optimizing health benefit packages
- Improving planning and allocation of an optimized workforce
- Building efficient platforms for training, coaching, mentoring, and supervising health workers
- Efficiently integrating HIV, TB, and malaria services with primary health care for maximum reach
- Integrating health information management systems and using data to identify gaps and target services
- Strengthening health security, pandemic preparedness, and climate resilience

SUPPORTING STRONG, SELF-SUFFICIENT HEALTH SYSTEMS

- In **Ethiopia, Indonesia, and Kenya**, MSH supported development and implementation of national TB financing roadmaps; in **India**, we helped create a working capital loan fund to support expanded TB services among private providers. In **Nigeria**, MSH helped build domestic resource mobilization frameworks for malaria services nationally and in 8 states. We helped **Rwanda** to launch and sustain its community-based health insurance scheme; **Indonesia** and **Ukraine** to establish national health technology assessment (HTA) programs; **Angola, Burkina Faso, Madagascar, Malawi, Sierra Leone, and South Sudan** to cost their primary health care service packages; **Cameroon, Dominican Republic, South Sudan, and Swaziland** to identify and preempt funding gaps relating to medicine procurements; **Uganda** to increase domestic HIV funding and to quantify and procure its own HIV commodities; and **Ukraine** to outsource storage and transport of critical medicines.
- MSH adapted LMA for national public health institute leadership teams (in **Kenya, Malawi, Nigeria, Peru, Rwanda, and Uganda**), helping them establish national and provincial public health emergency operations centers and local rapid response teams.
- MSH helped **Tanzania** to develop a national Health System Strengthening Plan and update the standard treatment guidelines, quality improvement framework, essential medicines list, and anti-microbial resistance action plan; **Rwanda** to optimize the health workforce and professionalize community health workers; **Zambia** and **Haiti** to transition funding of HIV service delivery workers from donors to the government; and **Madagascar** to phase out external TA through a “district graduation” process.