

# MANAGEMENT SCIENCES FOR HEALTH

**MANAGEMENT SCIENCES FOR HEALTH (MSH)** is a global nonprofit organization that provides governments, health organizations, and the private sector with the strategies, tools, and management support to effectively and efficiently deliver high-functioning health systems.



Photo credit: Timothé Chevaux/MSH

## WHAT WE DO

We collaborate with all levels of the health system—from government ministries to frontline health workers—to address key global health challenges and achieve universal and equitable health services for all, helping people to ultimately take charge of their own development—and their own health.

### Transforming Health Systems

Our systems thinking approach prioritizes robust primary health care, effective data use, and a skilled and optimized workforce. A high-performing health system also requires an efficient supply chain system to ensure that quality, affordable medicines and other commodities are available when and where they're needed.

Systems Thinking for Health • Data, Health Information, and Measurement • Primary Health Care • Health Workforce Development • Leadership, Management, and Governance • Pharmaceutical and Supply Chain Management • Health Care Financing • Product and Health Technology Optimization

### Taking the Bold Steps Necessary to Move toward UHC

Working with local and country-based partners, our programs are designed to help shape and implement policies to ensure that universal health coverage (UHC) policies and programs are inclusive and equitable. We do this with a focus on locally developed and led innovations and partnerships across sectors, including the private sector, and a focus on training to make data and other evidence-based decisions.

Policy and Advocacy • Innovative Partnerships • Private-Sector Engagement • Health System Innovations • UHC

### Tackling the Biggest Global Health Challenges

From promoting the uptake of effective malaria treatments and prevention in Nigeria to working for better health outcomes for expectant mothers in Guatemala, we partner with communities to take on the toughest global health challenges to prevent the spread of disease and protect health workers, patients, and communities.

Tuberculosis • Malaria • HIV/AIDS • Noncommunicable Diseases • Infectious Diseases • Women's, Children's, and Adolescents' Health



## OUR MISSION

We work shoulder-to-shoulder with countries and communities to save lives and improve the health of the world's poorest and most vulnerable people by building strong, resilient, sustainable health systems.

## OUR VISION

A world where everyone has the opportunity for a healthy life.

## WHERE WE WORK

Since our founding in 1971, MSH has improved health systems in more than **150 countries** worldwide.

We currently have work in **37 countries**.

**STRONGER**  
HEALTH SYSTEMS.  
**GREATER**  
HEALTH IMPACT.

# CHANGING WORLD, CHANGING MSH

The nature of our work at MSH is rapidly evolving to support our partner countries as they face COVID-19, climate change, and conflict. Over the next seven years, we will help countries adapt science-based solutions for local health systems challenges that will sustain the delivery of equitable, high-quality, people-centered primary health care.

## OUR FIVE STRATEGIC PRIORITIES



### LOCALIZE

- Further build our global presence to move our operations increasingly outside of the US
- Establish a local presence in priority countries through a country representative or a strategic partnership with a local organization
- Forge innovative country partnerships and develop business models that drive innovation at the local level



### FOCUS

- Focus on supporting local leaders to develop resilient, people-centered health systems that are prepared for pandemics, disease outbreaks, and climate change
- Invest in expertise in health economics and financing, capacity strengthening, pharmaceutical systems, and supply chain areas where we see a growing need among our clients and partners



### UNLOCK

- Focus on knowledge sharing and learning, internally and externally, with both global and local partners



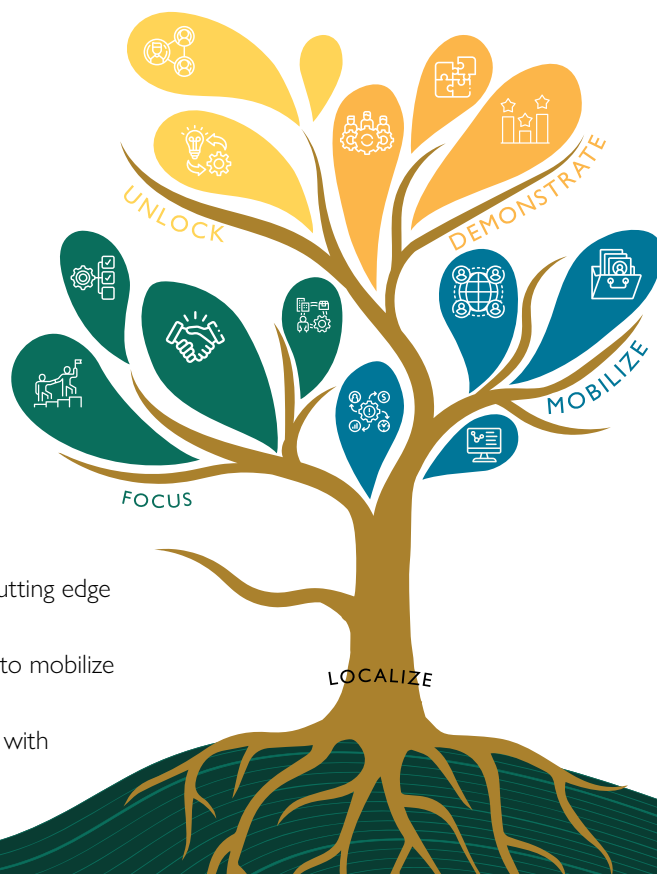
### DEMONSTRATE

- Use leading-edge data collection and management techniques to develop innovations, improve our project performance, and improve population health
- Strengthen the ability of governments, the local private sector, local partners, frontline health workers, and communities to use data to drive better decisions and innovations
- Use data to add to the global body of knowledge and demonstrate the impact of health systems interventions



### MOBILIZE

- Seek out strategic partnerships with organizations working at the cutting edge of areas relevant to our strategic priorities
- Work directly with governments, private sector, and local partners to mobilize resources for new ideas
- Broaden our body of partnerships to drive more impact, especially with multilateral organizations, the private sector, and philanthropies



## KEY FACTS

FY2024 Revenue: \$169M

President and CEO: Marian W. Wentworth

Employees:\* 980+

720+ outside of the US

**73%** of MSH personnel in countries or regional offices are from the country or region where they work.

\*Information from January 2025

MSH's sources of support include the US Agency for International Development (USAID); US Centers for Disease Control and Prevention (CDC); Bill & Melinda Gates Foundation; UK Foreign, Commonwealth and Development Office (FCDO); and many more organizations from government, multilateral institutions, and the private sector.

For more information on MSH, please visit [www.msh.org](http://www.msh.org) or email [communications@msh.org](mailto:communications@msh.org).



Updated July 2025